

Autofocus

Panoramic Errors



Error

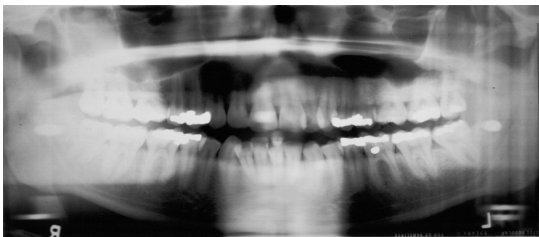
Radiopacity in the mandibular symphysis.

Cause

Vertebrae is truncated. Notice the spine angulation and lack of spine in image.

Remedy

Position patient's neck in a more upright, neutral position.



Radiopaqueness throughout image. Large anteriors.

Autofocus layer light positioned too far forward. Notice no spine in the image.

Move autofocus layer light back to root tip of tooth #9.



Small teeth and lots of spine in image.

Autofocus layer light positioned too far back. Notice the small teeth and the amount of spine in the image.

Move autofocus layer light forward to the root tip of tooth #9.



Exaggerated smile (curve of spee).

Patient's chin positioned too low.

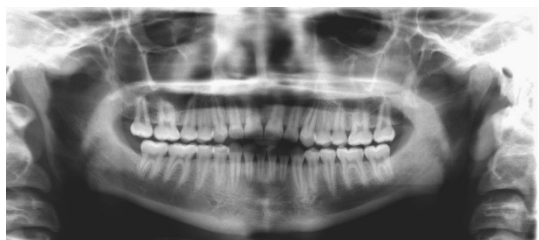
Raise panoramic up to proper occlusal plane position.



Frown curve of spee.

Patient's chin positioned too high.

Lower panoramic down to proper occlusal plane position.



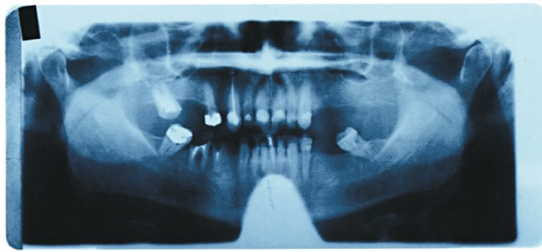
Flat curve of spee.

Patient's occlusal plane is parallel to floor.

Lower panoramic down to proper occlusal plane position.

Autofocus

Panoramic Errors



Error

White arch shape in lower anteriors.

Cause

Lead apron positioned too high in the back.

Remedy

Position lead apron high in the front and low in the back.



Tilted image.

Patient tilted. Notice opposing angles of mandible are not level.

Position midsagittal light in the center of the nasion.



Ramus and teeth are different sizes on opposing sides.

Patient twisted.

Ensure patient is positioned straight in panoramic.



Out of focused teeth and angled roots.

Patient moved during exposure. Notice teeth are out of focus and some roots are severely angled.

Instruct patient to stand still during duration of exposure.



Radiolucent oval in center of mouth.

Patient's lips not around bite stick and breathing through mouth.

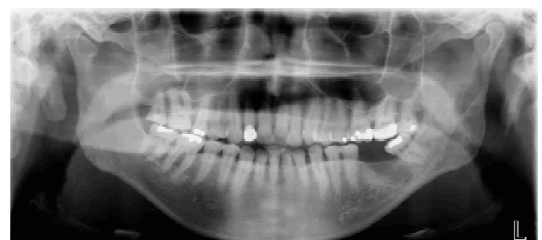
Instruct patient to place lips around the bite stick and breathe through their nose.



Radiolucent arch through maxilla.

Patient's tongue not on roof of mouth. Notice dark arch throughout maxilla darkening the apices.

Instruct patient to place tongue on the roof of their mouth.



Wavy radiolucency throughout maxilla.

Patient swallowed during exposure.

Instruct patient to not swallow during duration of exposure.