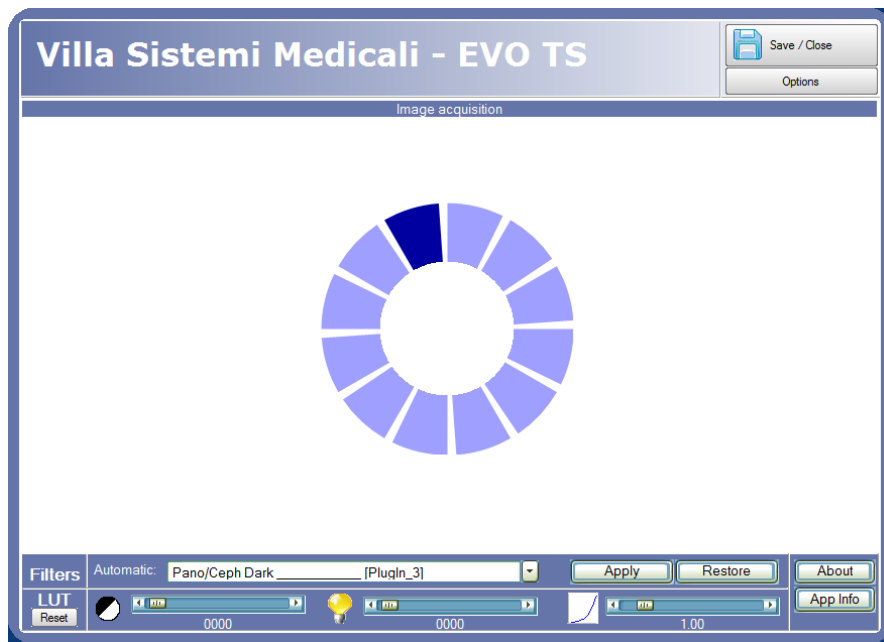
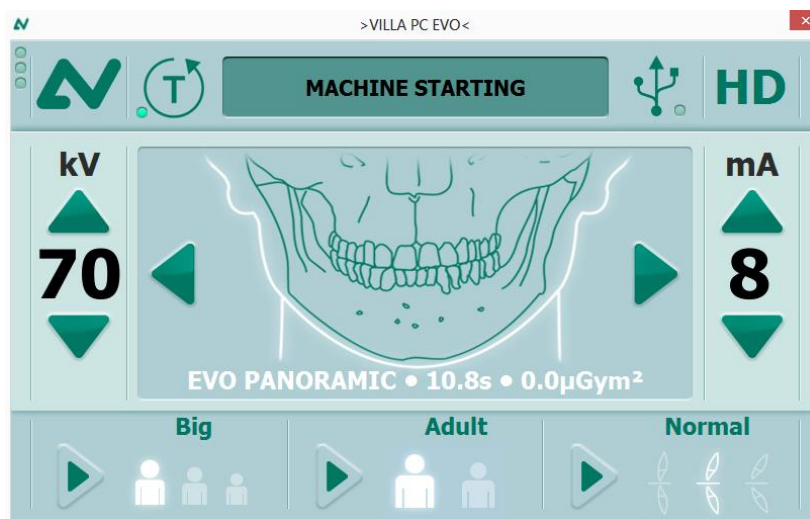


Driver twain startup.

When you open the twain driver from your application, the following windows will be displayed. If you don't click on the "Options" button, the acquisition will automatically start with the standard parameter.



Picture 1



Picture 2

If you click on the "Options" button you can configure the machine parameters.

Machine configuration.

In this section you can set all the working parameters.

EVO TS - Options

MACHINE SETTINGS

TCP IP ADDRESS: 192.168.5.45

TCP IP PORT: 8000

CALIBRATION

PASSWORD: Service

ADVANCED SETTINGS

☐ Close the twain driver after acquisition

☐ Use advanced filters (usb key is needed)

AUTOMATIC GAMMA: 190

LANGUAGE:

Picture 3

MACHINE SETTINGS

TCP IP Address. This is the TCP IP address of the machine.

TCP IP Port. This is the TCP IP communication Port of the machine.

CALIBRATION

Password. Please fill the password field before calling the service procedure. If you type a wrong password you won't be able to run the service procedure.

ADVANCED SETTINGS

Close the twain driver after acquisition. If you set this option the twain driver will acquire the image and automatically will close itself. In this way you cannot modify the acquired image inside the twain driver window. If this option is not checked the twain driver will stay open after the acquisition. In this way you can manually modify the image before sending it to the application.

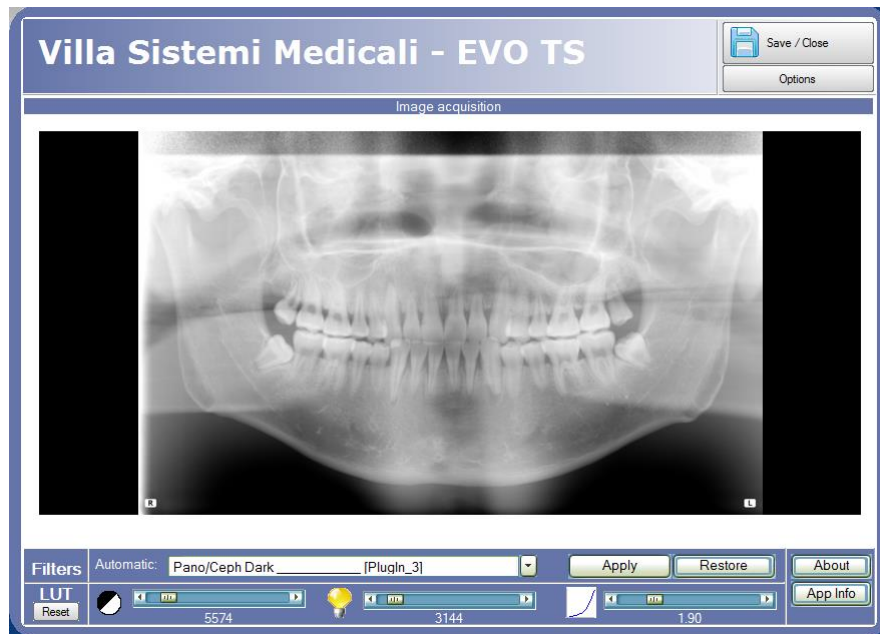
Use advanced filters. This function will activate the advanced plugin filters. To use the plugin filters you need to have the usb dongle key and Dental Studio Plus installed.

Automatic Gamma. This is value of the gamma correction to apply to the image. This value will be automatically applied.

Language. This is the language used by the twain driver.

SAMPLE PICTURES

The picture number 4 represent a panoramic image without gamma correction.



Picture 4

The picture number 5 represent a panoramic image with gamma correction.



Picture 5